



Flow, side table

Johan Pertl

EDITION
Delvis (Un)Limited edition of 20

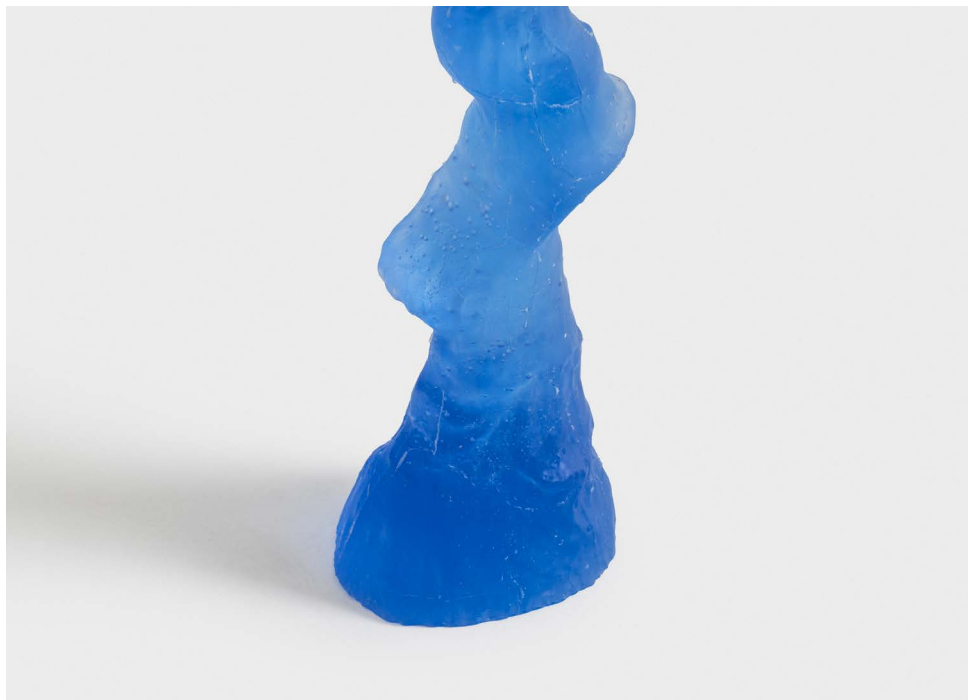
Formed through the same self-directed flow of molten glass, the side table translates this moment of liquidity into a functional object, balancing motion with stability.

DETAILS

BODY: Lead-free crystal glass
SIZE: L: 30 x W: 30 x H: 65 cm
L: 66.14" x W: 66.14" x H: 143.3"
NET WEIGHT: 30 kg, 66.13 lb
YEAR: 2024
PRICE: Upon request

MORE INFO:

The Flow collection is inspired by glass's ability to become fluid. Both the suspended object and the side table are shaped through the self-directed flow of molten glass, capturing a moment where material shifts from solid to liquid and back again.



Exhibition:

The Romance of Fragility

On the occasion of Milan Design Week 2026, Delvis (Un)Limited presents The Romance of Fragility, an exhibition exploring the value and potential of fragility through uses and interpretations of the ultimate fragile material: glass.

There are many ways a piece of furniture can speak the seductive language of fragility: the most immediate and simple is linked to the materials they are made of. Glass is stereotypically at the top of the list of fragile materials, and a group of international talents tells new stories around it, questioning its conventions and common perceptions, from many angles, in different forms, subjected to various types of stress, compared to materials that contrast with it.



BIO DESIGNER:

Johan Pertl is a Czech designer and glass artist based in Prague. He graduated from the Academy of Arts, Architecture and Design, where he is currently completing his PhD. Born in the glassmaking region of Vysočina, he draws inspiration from natural and social mechanisms, exploring light, material, and form in both experimental and functional objects. Working from his own studio in Strahov, Pertl creates most of his pieces by hand, ranging from authorial collections to commissioned works for private and public spaces.