

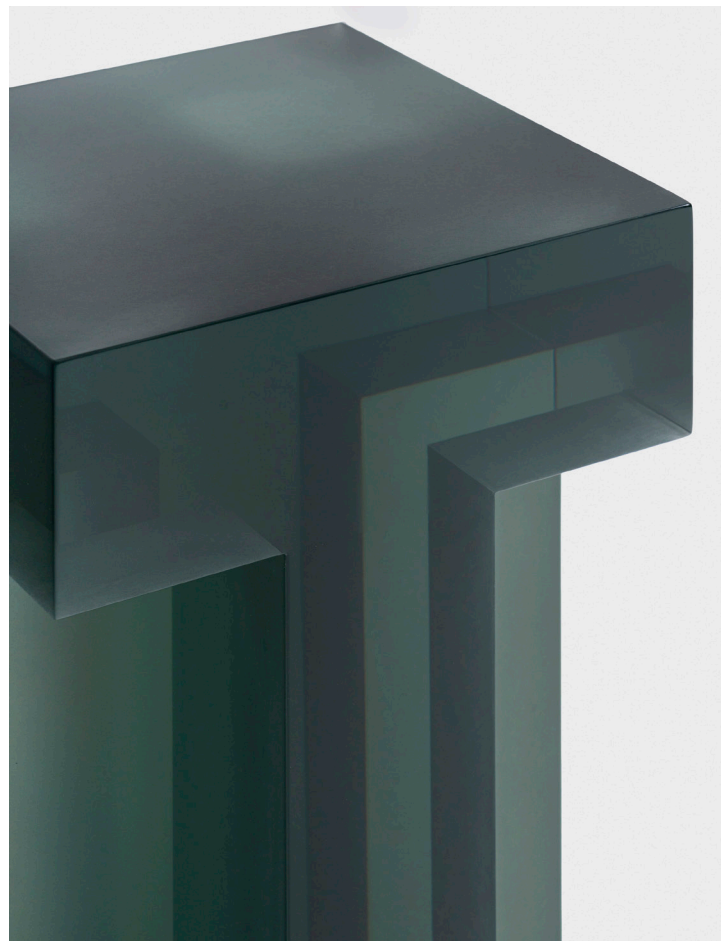


Tralucid Stool

COLLECTION
Delvis (Un)Limited

DETAILS

BODY:	Resin
SIZE:	L: 30 x W: 30 x H: 45 cm L: 11.81" x W: 11.81" x H: 17.72"
NET WEIGHT:	40 kg, 88,18 lbs
PRICE:	Upon request
YEAR:	2025

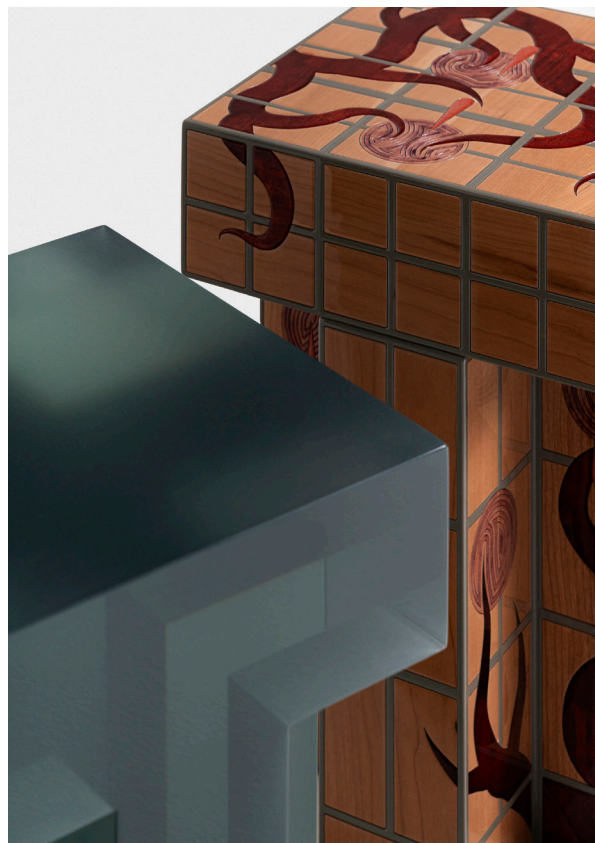
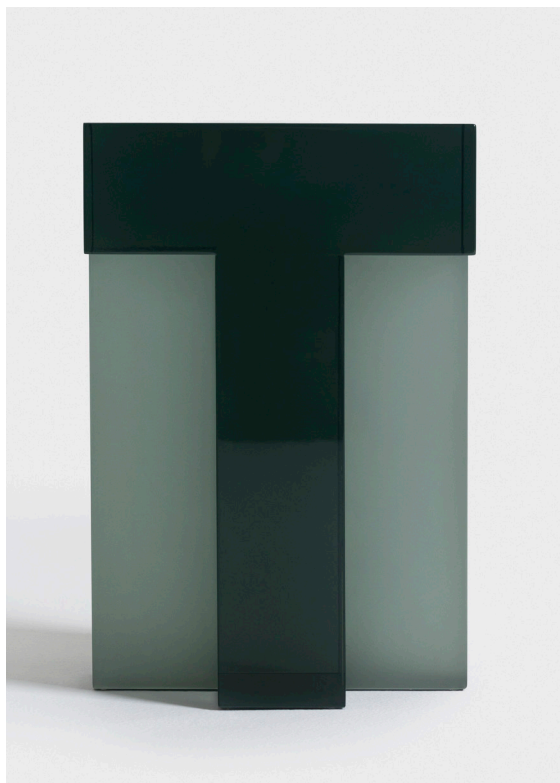
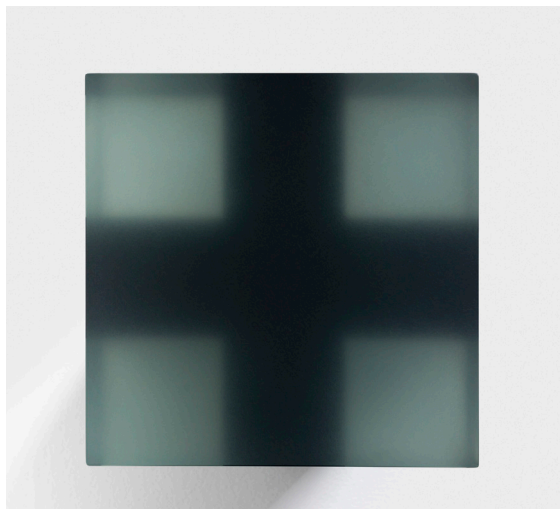


Laurids Gallè

This piece focuses on internal geometry. The matte surface on top ensures usability, while the sides, through refraction, create an illusion where the internal legs seem to reflect outward, appearing projected onto the stool's outer walls. The structure consists of four solid blocks that are visible from within, yet from the outside, they dissolve into negative space.

MORE INFO:

These works are all about the interaction of material and light, delving into the question: how does light behave with geometries if one creates a simple architecture with resin? Each of the four pieces in this series explores a different answer, revealing the nuanced relationship between structure, transparency, and light.



Exhibition:

The Theatre Of Things

THE THEATRE OF THINGS
7 nights and 7 days living with collectible design

Delvis (Un)limited - 6th to 13th of April 2025
The collectible design gallery/brand Delvis (Un)limited presents an exhibition-performance that showcases life in a living space designed by 7 designers. Challenged to juxtapose and intertwine their languages, the zdesigners are also invited to live in the space day and night, bringing to life a sort of domestic stage on the street. The exhibition is curated by Valentina Ciuffi and Joseph Grima. The creative direction is by Studio Vedèt, and the set design is by Space Caviar.



BIO DESIGNER:

Laurids Gallée (1988) is a Rotterdam-based designer who creates distinctive, one-of-a-kind pieces that prioritize material and artistic expression over conventional functionality. Central to his creative process is a sense of playfulness, which dares to explore unexpected shapes and ways of manipulating materials. This approach uncovers the artistic depth within each piece, inviting a sense of wonder. His work explores traditional and folkloric elements, reimagining them within the context of modern materiality, while also embracing today's advanced manufacturing processes to create a contemporary fusion. The studio's work revolves around two primary mediums: wood and resin. Every piece is meticulously sculpted or painted by hand, with careful attention to detail and finishes. By merging craftsmanship with contemporary manufacturing techniques, Laurids Gallée's studio bridges traditional and modern processes.